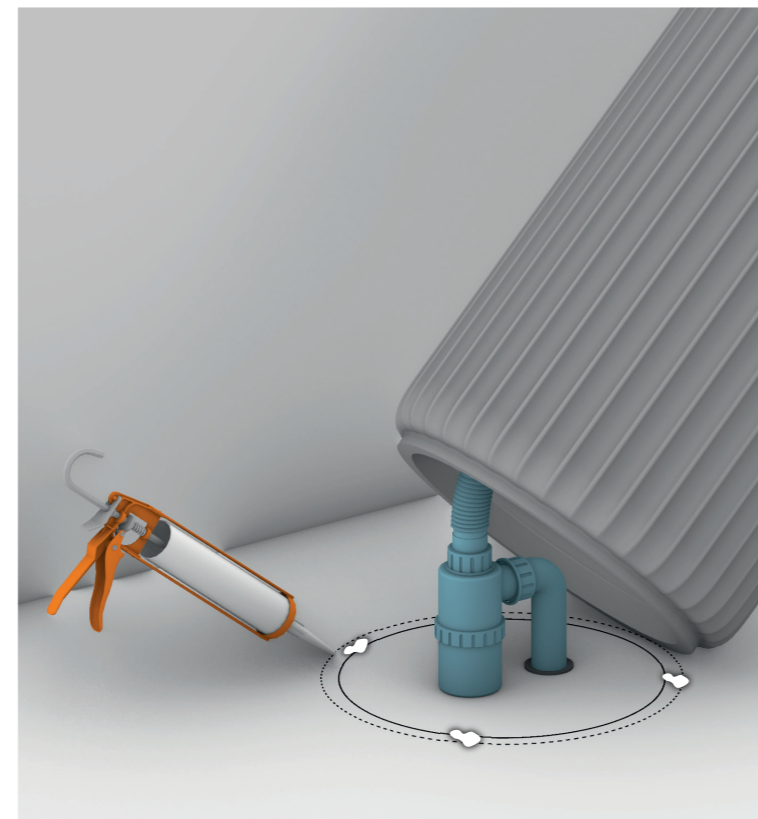
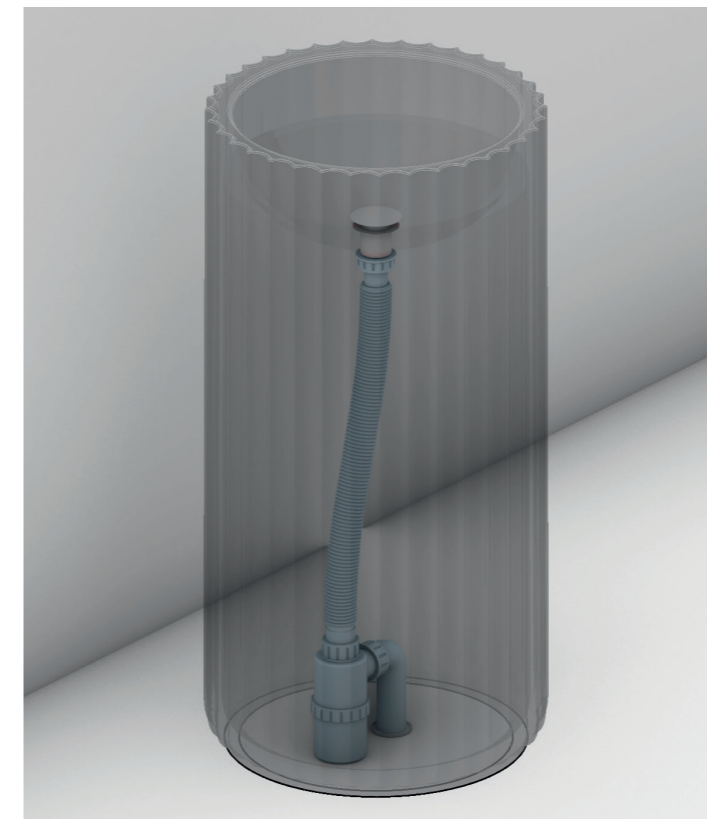


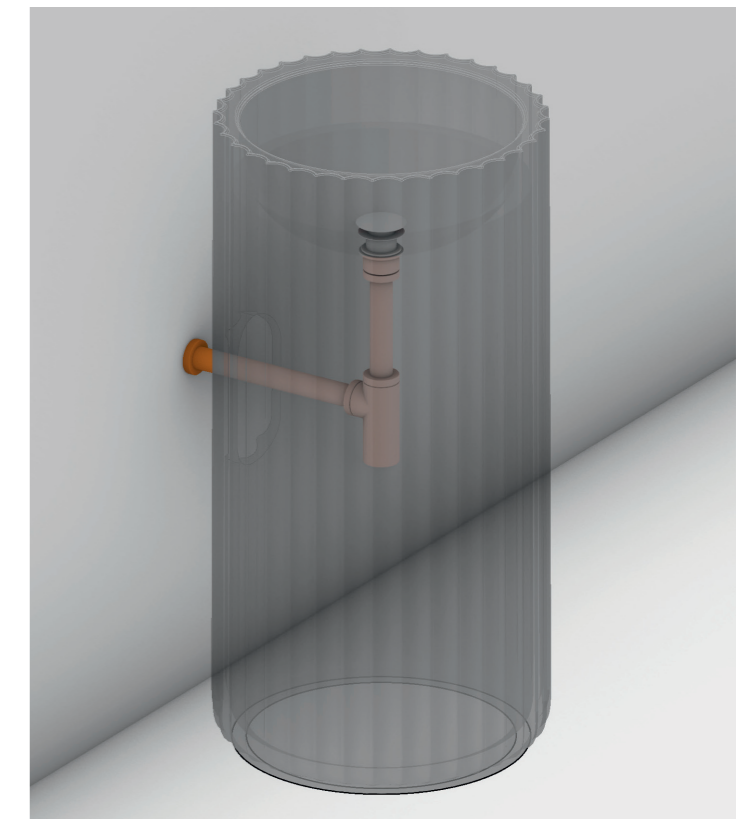
Collegamento del lavabo al sifone: avvitare la piletta stop & go e collegarla al tubo di scarico flessibile.
Connect the siphon to the basin: tighten the stop & go drain and then connect it to the flexible pipe.



Fissaggio del lavabo: mettere 3 palline di silicone alla base della colonna e alloggiare il lavabo in posizione.
Washbasin fixing: spread a small quantity of silicone only in 3 points of the base and place the basin in the right position



SE44C: Lasciare asciugare 24 H prima dell'utilizzo.
SE44C: Leave it drying 24 H before use.



SE44P: per il collegamento dello scarico a parete usare un sifone collegandolo attraverso il foro previsto nella ceramica.
SE44P: to connect the wall drain, use a siphon by connecting it through the hole already provided in the ceramic.