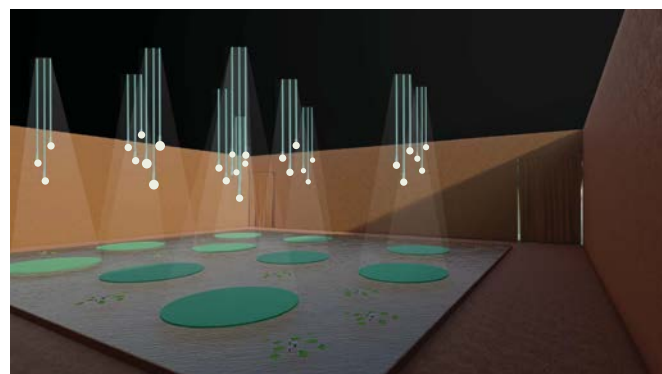
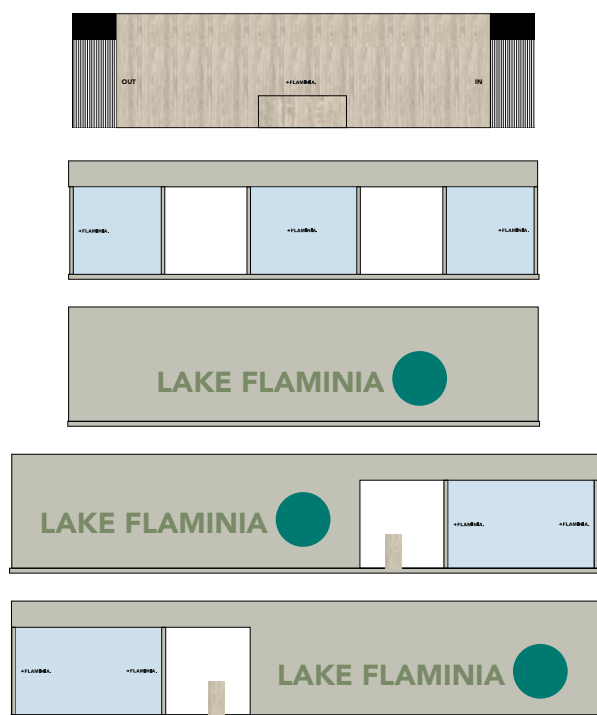


Flaminia presents its new creations for the bathroom and the kitchen at Cersaie, in an original setting: "Lake Flaminia"

From 26 to 30 September, the company will display new products and colours in a space designed by Giulio Cappellini



ESTERNO



vernicatura esterna RAL 7044

LAKE FLAMINIA

scritta deve essere come fondo piscina

bolle d. 180 cm RAL 6029

RECEPTION



tranci e vellario NERO pareti, pavimento, desk MIRAGE TRAVERTINO

AREA PEDANE



pareti RAL 8025 pav. MIRAGE N923 VASCA 1500x60x45 pedane RAL 6029 vellario NERO

Flaminia moves and amazes at Cersaie, in Bologna from 26 to 30 September, with an immersive installation conceived by *Giulio Cappellini*, where innovative bathroom furniture and fixtures are displayed in new colours, reflecting the company's distinctive approach to design.

In a space subdivided into two areas – one emotional and the other commercial – so as to explore all the facets of Flaminia's world, the display opens with the latest collections of the brand, featuring unprecedented finishes and contemporary colours, such as **Uva** and **Menta**, that draw inspiration from

the enveloping hues of nature. Among the protagonists of this historic moment for the brand, **Spire** and **Spire***, the washbasins designed by *Elena Salmistraro*, embody a synthesis of the designer's creative universe and Flaminia's manufacturing experience. Standing out among the latest collections are the elegant and monolithic bathroom fixtures, **Astra**, designed by *Giulio Cappellini*, as well as the organic lines of **Fluo** by *Niccolò Adolini* and the substantial volumes of **Flag** by *Alessio Pinto*. Also on display is **NudaFlat**, the minimal console by *Ludovica+Roberto Palomba*, and the **App** range styled by the company's internal design team,





which has been enriched with five new **AppLight** basins, in countertop and hung versions, different sizes and finishes. Towel racks can be fitted to the front of all these items.

Its journey into the universe of interior design has induced Flaminia to investigate the kitchen environment with a section dedicated to the **Acquafood** range of sinks, proposed here in a matt charcoal grey colour, whereby the objects acquire a new volumetric dimension, and featuring more clearly defined lines than the prototype presented earlier. The models in this range draw their inspiration from the ceramic sinks of the past, while interpreting that heritage in a contemporary vein.

The interaction between technical innovation and design also finds expression in **gosilent**, the flushing system that represents the evolution of the **goclean** project. In addition to facilitating the cleaning of the internal surface of the toilet bowl, so as to ensure flawless hygiene, **gosilent** greatly reduces flushing noise. Previously available solely



on wall-hung toilets, **gosilent** is now extended to **Monò**, the distinctive collection designed by *Patrick Norguet*.

Prompted by its desire to pursue ever new creative paths, the company welcomes visitors to a new immersive space, LAKE FLAMINIA, conceived by *Giulio Cappellini*. A place of natural inspiration, an emotional ecosystem with a strong visual impact, where the observer is engaged in an all-encompassing multisensory experience. The collections are displayed on round platforms resembling large tropical leaves afloat on a large water basin. In this case too, it is colour, in addition to design, to serve as a distinguishing feature of the products, which, albeit conceived by different designers, form an organic and coherent body of work. A belvedere terrace offers an overview of the installation. This unprecedented approach confirms the brand's commitment to experimentation and its ability to interpret current lifestyles and translate them into ever new designs.



AppLight

Design **FLAMINIA TEAM**

AppLight is a line of countertop and wall hung washbasins with the clean lines, marked volumes and the extremely thin edges allow these washbasins to be combined with the other collection of sanitarywares.

The **AppLight** are made in three different sizes and 2 depths to meet the various needs of both furniture and space.

The rigorous and at the same time simple shape makes them suitable for all furnishing contexts.



Acquafood

Design **GIULIO CAPPELLINI**
e **ROBERTO PALOMBA**

Paying attention to the new interior design trends, the Company explores the area usually dedicated to food preparation, introducing the **Acquafood** sink: a white-finished double sink, with a teak support, that recalls a familiar element. Ceramics goes back to being the main protagonist in the kitchen, as an alternative to stainless steel.



New finishes Menta e Uva

Design **FLAMINIA TEAM**

Flaminia continues its research on colour with the new matt **Uva** and **Menta** nuances that refer to the natural shades of green and terracotta. The new colours will be available on App washbasins and **gosilent** App sanitaryware.



SilverBlack& SilverWhite

Design FLAMINIA TEAM

The company also displays the new **SilverBlack** and **SilverWhite** ceramic finishes, that can be applied to a limited selection of products in the matt Latte and Carbone colours.



Spire⁺

Design ELENA SALMISTRARO

The wide rim of varying dimensions of the basin **Spire⁺** version is enriched by a relief decoration evoking the spires of a shell.



Spire

Design ELENA SALMISTRARO

Spire is a collection of countertop washbasins, in round or oval shape.

The sculptural quality of these objects underlines the beauty of the ceramic, while its rim in varying size, changes the perception of this object depending on the point of view.



Astra

Design **GIULIO CAPPELLINI**

The **Astra** collection of sanitarywares consists of back to wall and wall-hung Wcs and bidets. Their monolithic shape gives these objects with a strong presence, softened by lightly chamfered edges, but possessing great expressive force.

Astra is proposed in the different tones of the brand's colour palette and can be easily combined with the various washbasin by Flaminia.



App gosilent

Design FLAMINIA TEAM

Monò gosilent

Design PATRICK NORGUET

Silent evolution

gosilent is the new very silent flushing system.

It represents the evolution of **goclean** project which combines the elimination of the rim with the reduction of noise, this system makes easier the cleaning of the internal part of the wc and has an original design.

The reduction of noise using a gosilent wc is about 50% compared to the same model in the **goclean** version.



NudaFlat

Design **LUDOVICA+ROBERTO PALOMBA**

Careful dimensioning of the proportions, where sensual lines intermingle with rigid geometries, has given life to the **NudaFlat** console. In this project, material and design interact seamlessly to create a washbasin that is lightweight, essential, and at the same time highly sophisticated.



Flag

Design **ALESSIO PINTO**

A refined play on contrasts is the leitmotif of the **Flag** collection. Its generous volumes are adorned by fine details that design their contours.

A quintessential shape, rich with emotional variations. In particular, this collection explores the theme of colour. The interior and the exterior of the various elements generate refined colour combinations, giving life to an original finish, STRIPES, which combines on the same product two matte colour nuances.

Each proposal reveals a new, unexpected rendering of the collection.

Flag is a full range of sanitary ware products:

wall hung WC and bidet, a choice of washbasins

- three countertop models, a wall hung one with tap ledge, and a freestanding one -, and two mirrors with LED lights.



Fluo

Design **NICCOLÒ ADOLINI**

Fluo collection is characterised by the organic lines, soft surfaces that seem smoothed by water and soft lines without sharp corners emphasize the very essence of ceramic.

Seamless, light and decisive lines give shape to generous volumes ending in highly refined, slender profiles.



thanks to:

cappellini

Arredi area display.

MIRAGE[®]

Porcelain.Design.Sustainability

Sponsor tecnico : pareti e pavimenti ceramici.

nero
SICILIA

MOSAICO
MICRO

PIETRA
PECE

Mosaici decorativi pareti - collezione MOSAICOMICRO

ETHIMO

OUTDOOR DECOR

Arredi area lounge

Ph: Roberto Costantini

Press office:

Francesca Noseda - M&C SAATCHI PR
Tel. 0039 02 3674 8274
press@ceramicaflaminia.it
www.ceramicaflaminia.it

→ FLAMINIA.

Spazio Flaminia Showroom

via Solferino, 18 - Milano

t. +39 02 89055303 f. +39 02 89055490

spazioflaminia@ceramicaflaminia.it

Quality Management System UNI EN ISO 9001
Environmental Management System UNI EN ISO 14001



Ceramics of Italy

ADIMEMBER

Ceramica Flaminia Spa

Via Flaminia km. 54,630 - Civita Castellana VT

t. +39 0761 542030 f. +39 0761 540069

ceramicaflaminia@ceramicaflaminia.it

Copyright Flaminia 2022

Flaminia is a registered trademark of Ceramica Flaminia Spa