

5085G

Wall hung wc with goclean® system

Complements: Soft-closing thermosetting wrapping seat&cover (5085CW03)
Line accessories: TWO - HOOP - NOKÉ - FOLD

Technical accessories: Universal fixing bracket for wall hung wc/bidet (41/P)

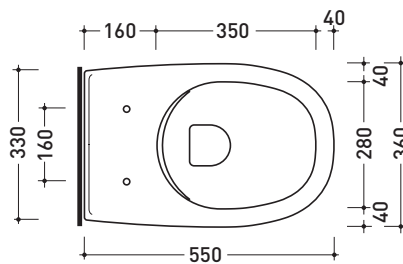
Package dim. 56 x 37 x 40 cm | Weight 23,5 kg | Pz. Pallet n° 15

CE UNI EN 997

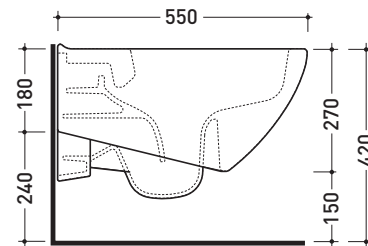
Dop-No997



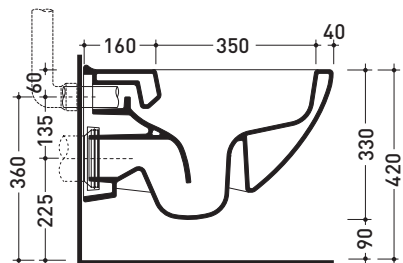
Flaminia does not recommend combining this toilet model with rapid-flow/flushometer systems or traditional high tanks



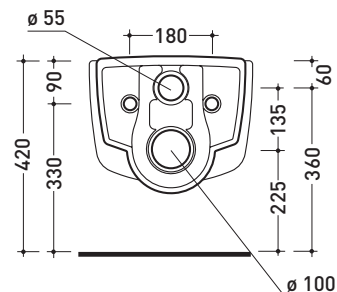
vista zenitale / zenital view



vista laterale / lateral view



sezione longitudinale / section



vista retro / back view

sizes in mm

CERAMIC: glossy finish



white black

matt finish



milky white carbone lava grey

Please consider a 2% tolerance on indicated measurements