

design L+R PALOMBA

1997

5059 Mini Twin 30

Wall-hung basin cm 27

• WITHOUT OVERFLOW • ARRANGEND FOR SINGLE-HOLE

Complements: Line accessories: TWO - HOOP - NOKÈ - FOLD

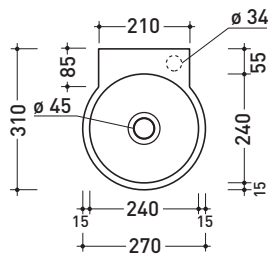
Technical accessories: Chrome siphon (SIFL/CR) - Telescopic chrome siphon (SIFL066)
 Stop & Go drain (PLSG)
 Ceramic Stop&Go drain (PLCE)
 Chrome waste with automatic integrated overflow (PLTPCR)
 Waste with automatic integrated overflow and ceramic cover (PLTPCE)
 Two piece set chrome tap filters (RF026)
 Fixing kit for wall (9002)

COLOURED WHILE STOCKS LAST

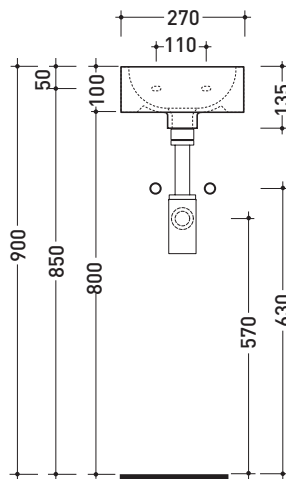


Package dim. 25 x 15 x 33,5 cm | Weight 5,5 kg | Pz. Pallet n° 54

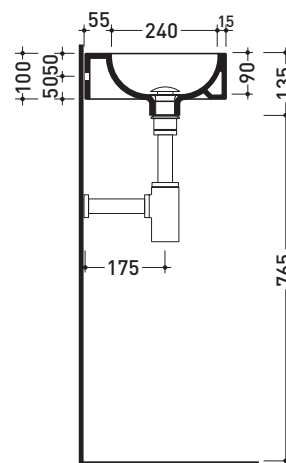
CE UNI EN 14688 - CL00 Dop-No14688



vista zenitale / zenital view



vista frontale / frontal view



sezione longitudinale / section

sizes in mm

Please consider a 2% tolerance on indicated measurements

CERAMIC: glossy finish

matt finish

FOR THE COLORS MARKED ASK FOR AVAILABILITY



white black



milky white carbone lava grey argilla nuvola fango rosso rubens petrolio