

design ROMANO ADOLINI

2006

UNA75L Una 75

Semi-inset basin 75 cm

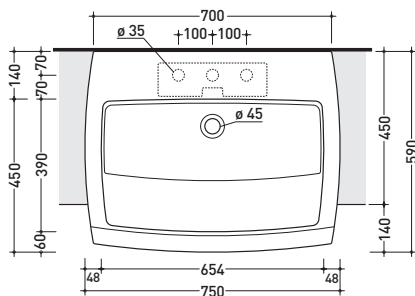
• WITH OVERFLOW • ARRANGED FOR THREE HOLES TAP

Complements: **Una furnishing** (UNA75C1 - UNA75C2 - UNA75V1 - UNA75V2 - UNA75M1 - UNA75M2)
Line taps basin: ONE - NOKÉ - FOLD - SI
Line accessories: TWO - HOOP - NOKÉ - FOLD

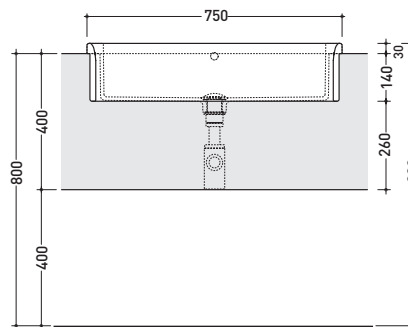
Technical accessories: **Chrome siphon (SIFL/CR) - Telescopic chrome siphon (SIFL066)**
Stop & Go drain (PLSG)
CERAMIC Stop & Go drain (PLCE)
Two piece set chrome tap filters (RF026)

Package dim. 76 x 20,5 x 61 cm | Weight 30,7 kg | Pz. Pallet n° 10

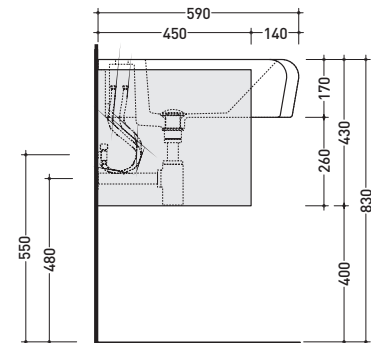
UNI EN 14688 - CL20 Dop-No14688



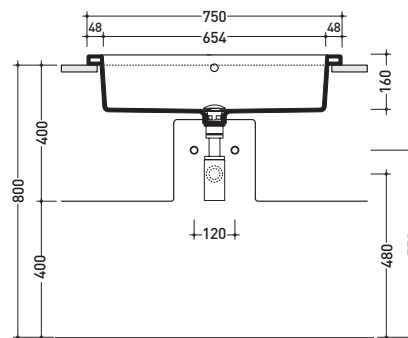
vista zenitale / zenital view



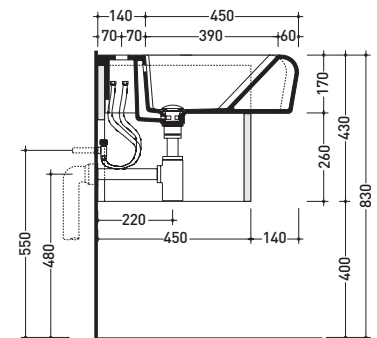
vista frontale / frontal view



vista laterale / lateral view



sezione trasversale / section



sezione longitudinale / section

sizes in mm

CERAMIC: glossy finish



white black

matt finish



milky white

Please consider a 2% tolerance on indicated measurements