

## VD60L Void 60

Countertop - wall hung basin cm 60

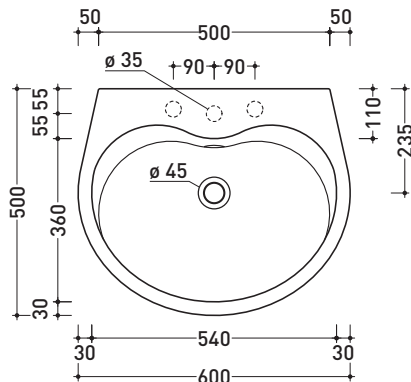
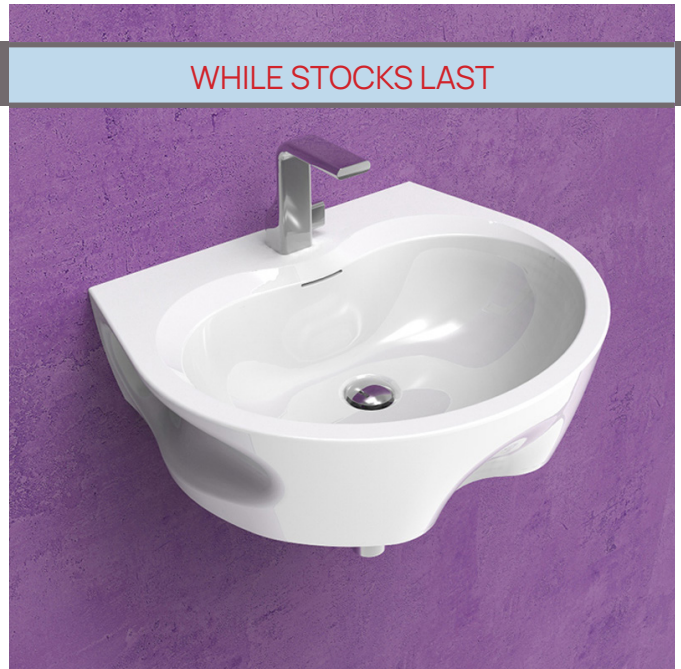
• WITH OVERFLOW • ARRANGED FOR THREE HOLES TAP

Complements: **Forty6 shelf (F6VD60)**  
**Furniture BOX - depth. 50**  
**Line taps basin: ONE - NOKÉ - FOLD - SI - X1**  
**Line accessories: TWO - HOOP - NOKÉ - FOLD**

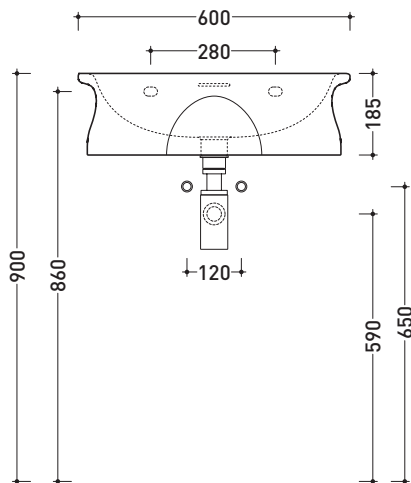
Technical accessories: **Chrome siphon (SIFL/CR) - Telescopic chrome siphon (SIFL066)**  
**Stop & Go drain (PLSG)**  
**CERAMIC Stop & Go drain (PLCE)**  
**Two piece set chrome tap filters (RF026)**  
**Fixing kit for wall (9002)**

Package dim. 61 x 19 x 51 cm | Weight 20 kg | Pz. Pallet n° 12

CE UNI EN 14688 - CL20 Dop-No14688

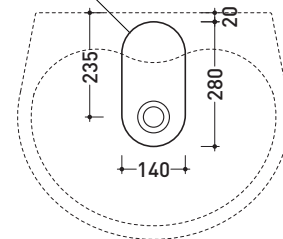


vista zenitale / zenital view

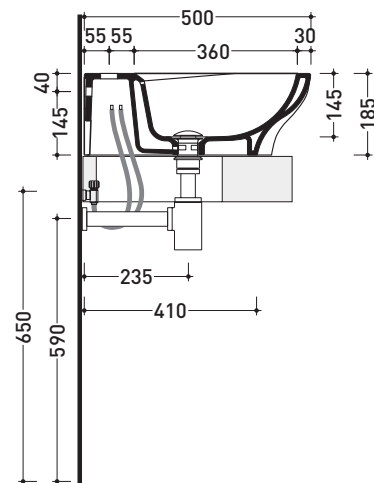


vista frontale / frontal view

foro consigliato sul piano  
suggested hole on the top



vista zenitale / zenital view



sezione longitudinale / section

sizes in mm

CERAMIC: glossy finish



white

## VD44L Void 44

### Countertop - wall hung basin cm 44

• WITH OVERFLOW • ARRANGED FOR THREE HOLES TAP

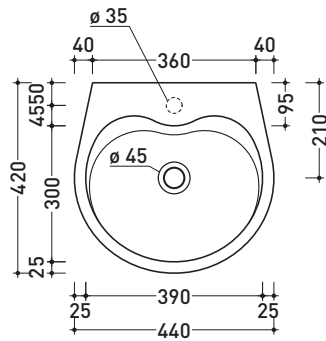
Complements: **Forty6 shelf (F6VD44)**  
**Furniture BOX - depth. 37**  
**Line taps basin: ONE - NOKÉ - FOLD - SI - X1**  
**Line accessories: TWO - HOOP - NOKÉ - FOLD**

Technical accessories: **Chrome siphon (SIFL/CR) - Telescopic chrome siphon (SIFL066)**  
**Stop & Go drain (PLSG)**  
**CERAMIC Stop & Go drain (PLCE)**  
**Two piece set chrome tap filters (RF026)**  
**Fixing kit for wall (9002)**

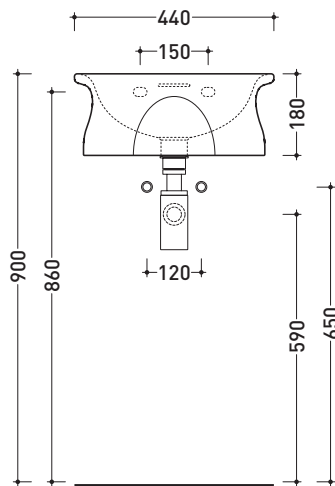
Package dim. **44 x 19 x 44 cm** | Weight **14,5 kg** | Pz. Pallet n° **30**

UNI EN 14688 - CL20 Dop-No14688

WHILE STOCKS LAST

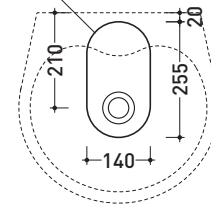


vista zenitale / zenital view

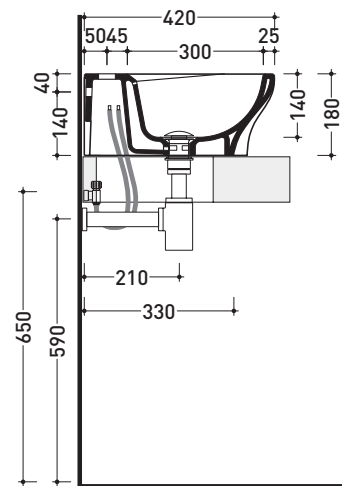


vista frontale / frontal view

foro consigliato sul piano  
suggested hole on the top



vista zenitale / zenital view



sezione longitudinale / section

sizes in mm

CERAMIC: glossy finish



white