

# Bonola

design JASPER MORRISON

2014

## BNCW03

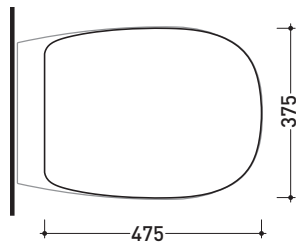
Soft-closing thermosetting wrapping seat & cover with quick-release hinges

Complements: Bonola wall hung wc (BN118)  
Bonola wall hung wc goclean (BN118G)

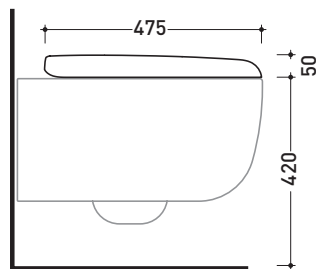
Package dim. 55 x 40 x 7 | Weight 3,8 kg | Pz. Pallet n° -



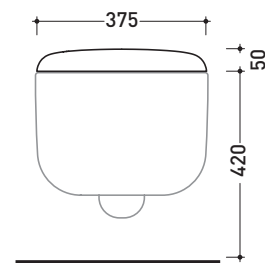
CE



vista zenitale / zenital view



vista laterale / lateral view



vista frontale / frontal view

sizes in mm

**THERMOSETTING:** glossy finish



white black

matt finish



milky white graphite lava grey argilla

<http://www.ceramicaflaminia.it/en/lines/279-bonola>

©ceramicaflaminiaspa - All rights reserved. Unauthorized copying, publication, reproduction as well as partial reproduction are prohibited

april 2019

